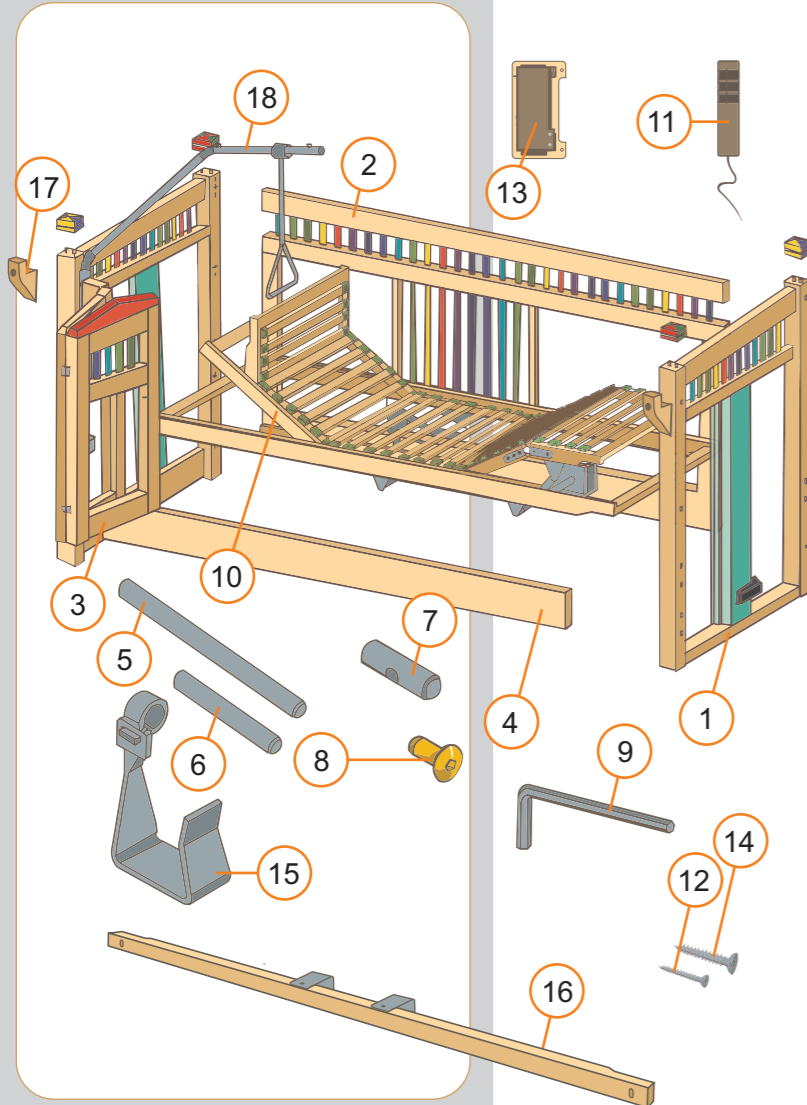


## Parts list and explosion views of your new **Olaf** - care cot



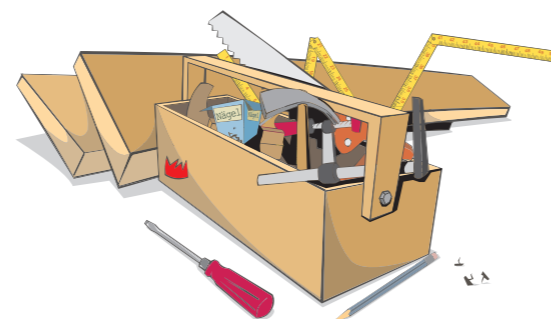
Pos.	Qty.	Designation
<b>Wooden surround</b>		
1	2	side frame
2	1	back part
3	2	folding door
4	1	architrave 150mm
<b>Fittings</b>		
5	10	threaded bars M8x140mm
6	6	threaded bars M8x110mm
6	8	threaded bars M8x110mm (for Olaf 135)
7	10	transverse nuts
8	16	brass caps
8	18	brass caps, (for Olaf 135)
9	1	allen key
<b>Sleeping platform</b>		
10	1	sleeping platform with slatted frame
11	1	manual control switch
12	1	power supply unit with mounting plate (only for KR1 and KR2)
13	2	screws for power supply unit (6x30mm)
14	1	?????
15	1	mounting for power cable
<b>External door security locking system</b>		
16	2	consoles
17	1	lock bar
<b>Optional</b>		
18	1	lifter

  
Care cots for children

...the original!



Assembly Instructions  
for your new **Olaf** - care cot



  
KayserBetten

Rieper Straße 12  
D-29683 Dorfmark  
Telefon: +49 5163 / 290044  
Telefax: +49 5163 / 290049  
www.kayserbetten.de  
info@kayserbetten.de

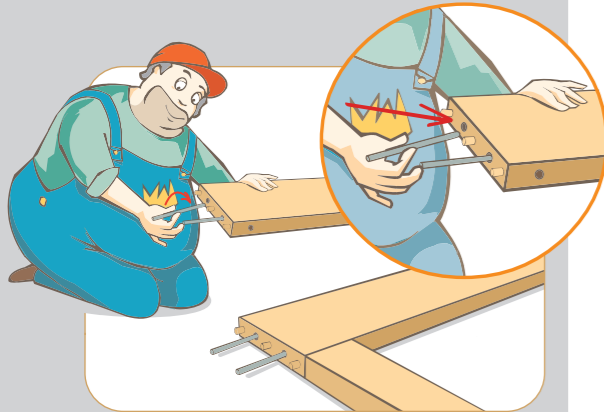
These are our mechanics  
Robert and Stefan.  
They will help you  
to assemble your KayserBed!



## Assembly Instructions for your new Olaf - care cot

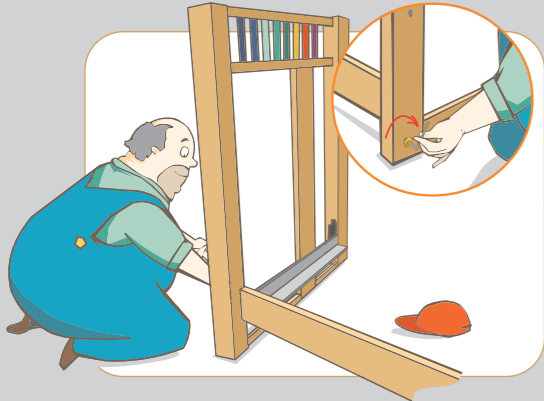
The assembly must be on a level surface.

Please lay the architrave (4) and the back part (2) on the ground in order to push in the transverse nuts (7). Now screw in the threaded bars (5).



Set up one side frame (1) and then install the architrave (4) by putting it with the threaded bars through the lower drilled holes of the side frame. The wooden pegs must fit properly into the drillings. Bolt the architrave with two brass caps (8).

Now, the construction stands steady already!



Set up the second side frame (1) so that the architrave (4) can be hung in. Secure this connection with loosely screwed brass caps.

Now the back part (2) has to be put between the side frames. Fit it into the first frame and then push the second side frame onto the threaded bars (drawing below).

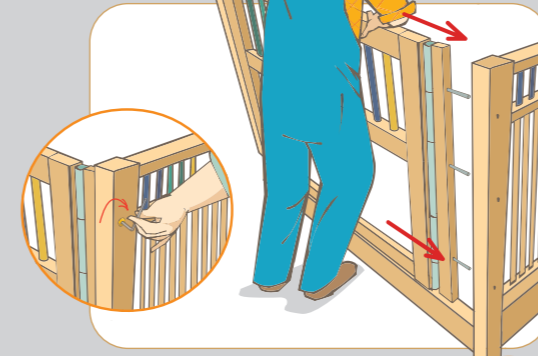
(For the Olaf 135 only: Screw the lower back part with brass caps securely to the side frame. Now the upper back part has to be put on the lower one and must be screwed securely to the same side frame. After this, screw the second side frame with brass caps.)

Secure all threaded bars with brass caps. In order to avoid tilting, firstly screw all brass caps on one side and then those on the other side.



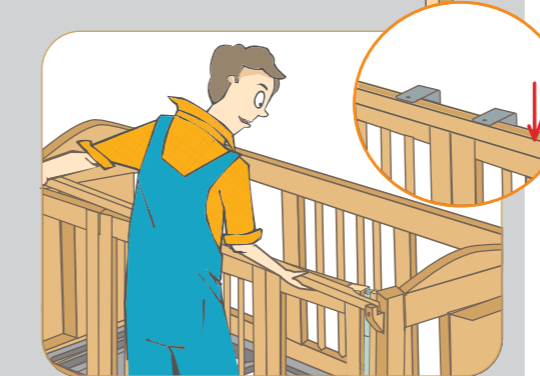
The bed is now ready so that the sleeping platform (10) can be inserted. At first, take the control units out of the packaging and fasten the power supply unit with mounting plate (14) to the lower inside of the sleeping platform (facing the back part) with the screws provided (15). The drillings do already exist.

Then you need a second person to help with the sleeping platform. To avoid pinching your fingers, hold it from the inside. The sleeping platform (10) needs to be laid carefully on the angles of the side frames. Please make sure that the cables are underneath in order to avoid them being trapped.



Install the switch box (12) with the screws provided (13) on the exterior of a side frame (out of reach of the patient).

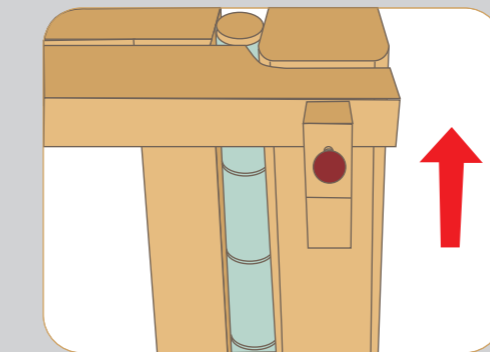
After screwing the threaded bars (6) into the assembly strips of the folding doors you should insert the doors with the lower guide pin into the aluminium profile of the architrave. Then push them against the side frame. Finally, screw the brass caps (8) onto the three threaded bars.



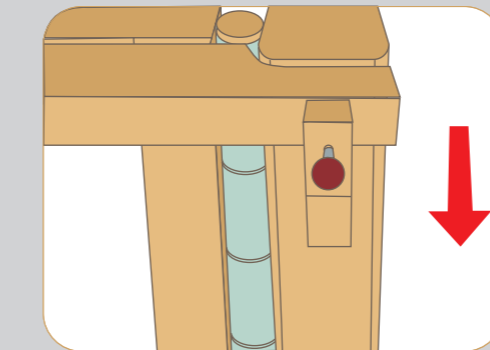
For mounting the locking bar, please put the console (17) in the drilled hole of the corner post on the head and foot side, adjust them and then secure this connection with screws.

Please put the first dowel on one side of the locking bar (18) in the console (17) of the corner post, then the second on the other side. The sheet metal overlaps the door slot.

You can lock the bar by pushing the (wine red) knob on the right and left side in the console. The bed is now locked.



To unlock the bed, please put the security knob out of the consoles.



Now your new Olaf-cot is ready to use.